

## A Leading Galician Garden

### and a Artistic Heritage Site

The oldest known records of the Padrón Artistic Botanical Garden date back to the year 1869; hence, it is considered one of the first botanical gardens in Spain. The oldest section of the garden, with a conscientious **French-style design**, is home to a flower bed filled with imaginative geometric shapes, infused with symbolism in relation to the cultural elements that form its identity. The most recent section, with an **English-style** design and rows of majestic London planes, bears witness to the social splendor of Padrón of times past, when the chords of music resounded on the town's most important occasions. It is also worth remarking the St. James-themed perimeter fence surrounding the garden, which contains iconic elements such as scallop shells and the Cross of St. James.

Spanning approximately **1 hectare**, the garden is home to approximately **300 species**, the most specific of which are categorized as **veteran trees**. This definition includes fascinating examples such as a Senegal date palm, two coastal redwoods, a Christ thorn, an English oak and a horse-chestnut.



Concello de Padrón  
Concellería de Turismo



Deputación  
DA CORUÑA



XUNTA  
DE GALICIA



Concello de Padrón

Padrón\_Turismo  
+34 646 593 319  
turismo@padron.gal  
www.terrasdeiria.com



# Padrón ARTÍSTIC BOTANICAL GARDEN

## Padrón Artistic Botanical Garden

The Padrón Artistic Botanical Garden belongs to the **Spanish Assets of Cultural Value** (1946) and is considered one of the leading botanical gardens in Galicia due to the meaningfulness of its garden elements. It has been an **artistic heritage** site for decades, and the theme of its design is **closely related to the Roman Catholic tradition of Padrón** as the “cradle of St. James,” given this name because popular tradition claims it to be the place of the disembarkation of the body of Saint James the Great. Another universal cultural element latent in the garden is **literature**, transmitted through the presence of important writers such as poet Rosalía de Castro, Nobel Prize winner Camilo José Cela, Galician troubadour Macías “o Namorado” (“the Lover”), or the great Castelao – writers whose souls live on through the garden. Furthermore, the **commemorative** activity of this space is reflected in its monumental elements, including sculptures and meaningful species whose presence pays tribute to the region's most recent history.





## VETERAN TREES

Trees from the Galician Catalog of Veteran Trees:



### SENEGAL DATE PALM

This is one of the most emblematic plants in the garden due to its spectacular growth and morphology. It was brought from Africa approximately 100 years ago, and continues to be considered the most important example of this plant at a Spanish garden.



### COASTAL REDWOODS

The two coastal redwoods are the largest trees in the garden. They are dedicated to our illustrious writers: the Macías "O Namorado" redwood, in honor of the medieval troubadour born in Padrón, and the Rosalía de Castro redwood, in honor of the town's most universal writer, who, during the last days of her life spent at the Casa de la Matanza in Padrón (currently the Rosalía de Castro Museum), unfailingly visited the garden, writing some of her poems under the shade of this tree.



### ENGLISH OAK

This is an interesting specimen which stands out for its size and for being the only one with these features still standing in Galicia today.



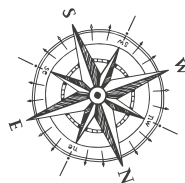
### CHRIST THORN

A unique species in Galicia, this plant draws visitors' attention due to the unique shape of its crown of thorns. It is enveloped in mysticism, with its other names in Spanish including "tree of love" (for its heart-shaped leaves) or "tree of Judas" (identified as the tree where the apostle hung himself after betraying Jesus Christ).

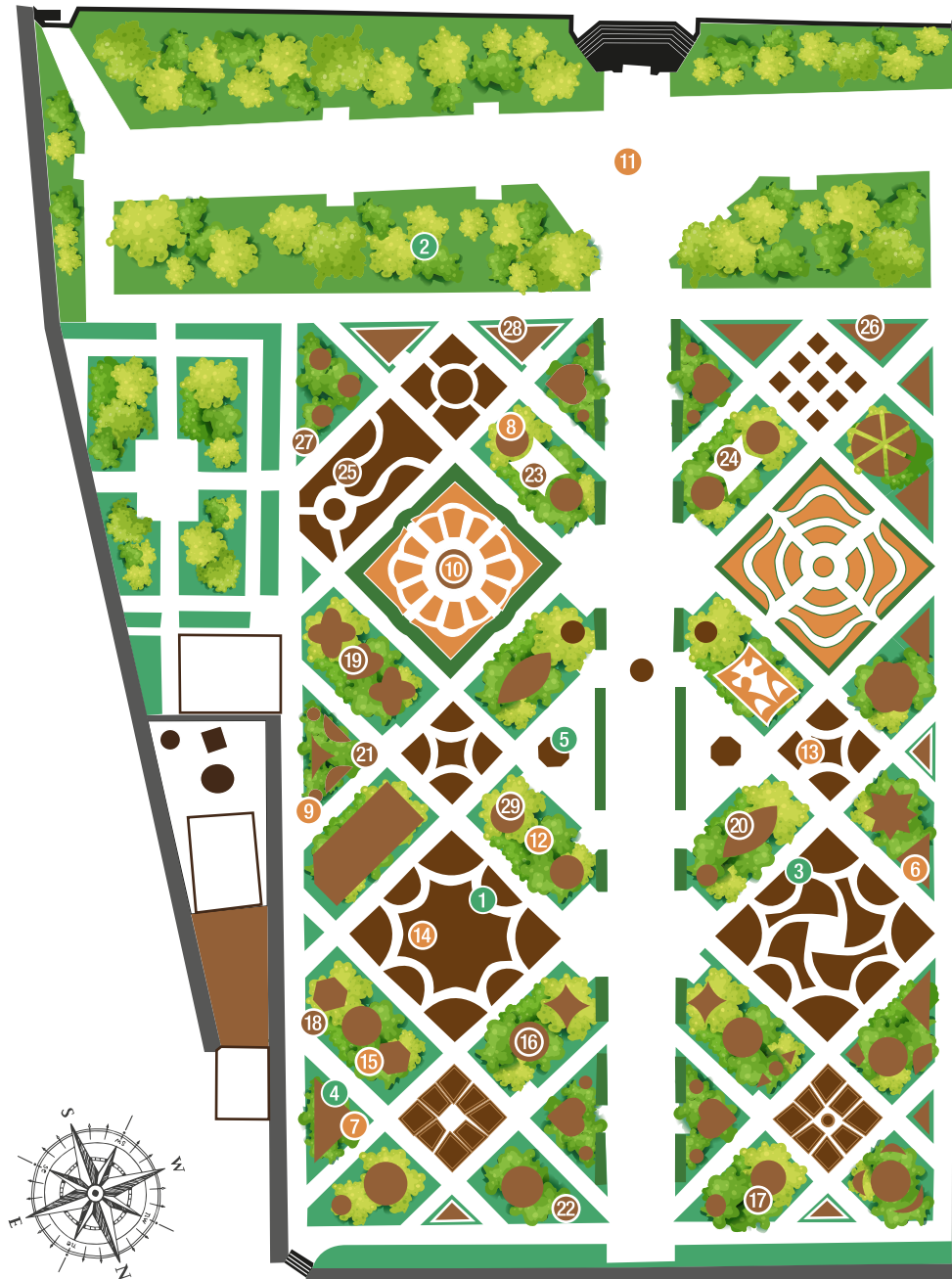


### HORSE-CHESTNUT

This is a very common tree in Galician gardens, although this specific specimen has the particularity of growing freely without human pruning.



Avenida de Compostela (N-550)



Rúa Defensa do Xardín

Avenida da Estación

### GARDEN LAYOUT

Alameda  
Parterre  
Service Area

### MONUMENTAL ELEMENTS

1. Monument to Macías "O Namorado"
2. Monument to Castelao
3. Monument to Ernesto Gende
4. The Lovers' Bank
5. Monumental Fountain

### VETERAN / MONUMENTAL TREES

6. Common Horse Chestnut
7. Common Hornbeam
8. Judas Tree / Christ Crown
9. Drooping Juniper / Top Hat
10. Senegal Date Palm
11. 'T' of London Planes
12. Cypress Oak
13. Rosalía de Castro Californian Redwood
14. Macías "O Namorado" Californian Redwood
15. Coral Tree

### COMMEMORATIVE TREES

16. Nobel Common Box
17. Xanas Sasanqua Camellia
18. Thorns Crow
19. School Community Sago Palm
20. Rosalía de Castro Fig Tree
21. Pazo de Lens Common Holly
22. Aranda de Duero Spanish Juniper
23. Sixth Centenary Olive Tree
24. Milenium Olive Tree
25. 11-M Date Palm
26. Noirmoutier Hold Oak
27. Euro Pedunculate Oak
28. Castelao Pedunculate Oak
29. Volunteering Holly

## MONUMENTAL ELEMENTS



### CAST IRON FENCE



### LOVERS' BENCH (2011)

Bronze monument erected to remember the enamored Padrón couples who typically visited this section of the garden.



### MONUMENT TO MACÍAS "O NAMORADO" (1963)

Medieval troubadour born in Padrón. The 21 poems of the "Songbook of Baena" are attributed to him, along with a daring lovers' legend, different chronicles of which currently exist today.



### BUST DEDICATED TO CASTELAO (1998)

Bust of the Rianxeiro writer donated by the town of Rianxo.



### MONUMENT TO ERNESTO GENDE (1983)

A granite bust of the illustrious school teacher and professor, Ernesto Gende Rodríguez. It was donated by his students to thank him for his dedication.



### ORNAMENTAL FOUNTAIN